



Offshore

SEA's Offshore Division supplies survey and environmental system products, together with bespoke engineering design services, into the commercial maritime market.

Providing high-quality engineering skills in the areas of electronics and software engineering, system modelling and algorithm development, we provide cost-effective seabed survey products that meet the exacting demands of the maritime market. With strong engineering expertise in electronics and software we offer the offshore industry sector bespoke system design and development. Our connections with academia provide the basis for maritime R&D and environmental protection.

PRIMARY BUSINESS AREAS

- Survey systems
- Design services
- Design support services
- Environmental systems



Survey systems: We supply the SWATHplus bathymetric survey sonar for operation on both survey ships and on autonomous underwater vehicles. We also supply the ECHOplus range of seabed discrimination systems.



Design services: We provide hardware and software expertise for design, build and modifications to customer electronic systems (including control, communications and sensor systems) for use in the commercial maritime sector.



Design support services: We provide design support for offshore systems, including the analysis of requirements and overall system design, simulation and modelling of system design options and establishing test criteria for system acceptance.



Environmental systems: We undertake research and development into maritime environmental monitoring systems, including research studies, algorithm development and equipment build, in particular for marine mammal protection.

SEA provides engineering and software design services for demanding environments. We have built a reputation for being at the forefront of research programmes with the ability to pull through science and technology into new systems and products. We employ high-calibre staff and place our emphasis on quality of service, innovation, flexibility and cost-effective solutions.

Markets

We operate in four key market sectors and our organisational structure provides integrated business management teams to address specific market and product sectors.

- Defence
- Aero-Space
- Offshore
- Transport

Expertise

- High-integrity systems
- Synthetic environments
- Advanced sensors
- Secure communications and networks
- Applied research
- Data fusion and information systems
- Human Factors

Beckington Castle
17 Castle Corner
Beckington Nr Frome
Somerset BA11 6TA UK
T: +44 (0) 1373 852 000
F: +44 (0) 1373 831 133

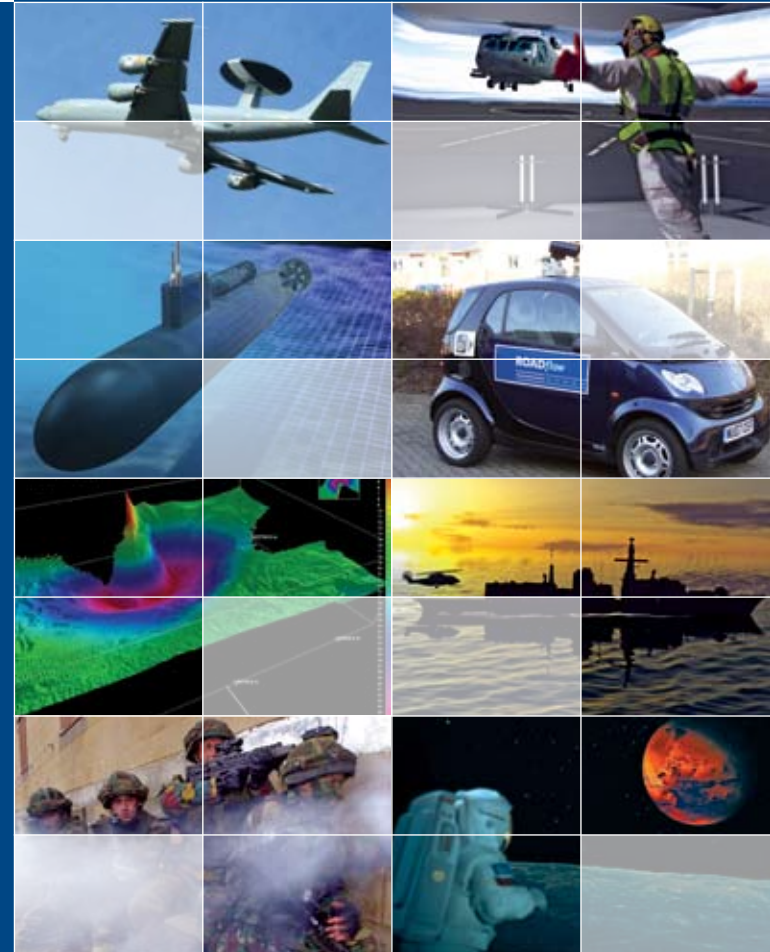
SEA House Building 660
Bristol Business Park
Coldharbour Lane
Bristol BS16 1EJ UK
T: +44 (0) 1373 852 000
F: +44 (0) 0117 969 1177

email: info@sea.co.uk

www.sea.co.uk



Pulling through science and technology



a Cohort plc company

Defence

SEA provides equipment and engineering services to the defence markets. Combining high-value engineering with military domain knowledge, our portfolio covers MoD, defence prime contractors and research institutions.

The UK and international defence sectors demand complex and wide-ranging engineering capabilities. Services range from technology research, equipment design, software and simulation, human factors and on to obsolescence management. With over 20 years' of delivering solutions in all areas of defence from submarine systems through to business case support, our extensive reservoir of knowledge is respected for its depth of capability. SEA's highly responsive, agile and capable workforce provides value and quality.

PRIMARY BUSINESS AREAS

- Underwater
- Maritime
- Land and air
- ISTAR



Underwater: Providing products and expertise for submarines and submersible vehicles. Systems include external communications, internal networks, and data recording. We also provide technical advice on autonomy, sonars, combat systems, and open architectures.



Maritime: Support and development of open ships sensor and networking systems, incorporating data fusion technologies, to sustain incremental evolution. Derisking of critical ship design and operational issues through high-fidelity synthetic environments and training systems.



Land and air: Providing innovative solutions across helicopter through to soldiers systems and special projects. Expertise includes: advanced dismounted soldier solutions, specialist equipments, advanced avionics, simulation and human factors.



ISTAR: Our expertise covers three main areas, Geospatial Intelligence (GI) Information and Intelligence (I2) services, and EW systems. Our capabilities lie in product development, supply of sensor systems, networks and technical studies.

Aero-Space

SEA's aero-space team offers high-level system skills and undertakes system design, development and qualification. We supply test and calibration equipment, and flight hardware.

Our experienced team has a successful track record in undertaking design and development activities with institutional customers, prime contractors, subsystem and instrument integrators, SMEs and universities. We aim to offer solutions based on strong intellectual foundations, full mission understanding and disciplined development methods. We participate at all technology readiness levels for developments from electronics units to complete instruments.

PRIMARY BUSINESS AREAS

- Airborne
- Space
- Ground support
- High-integrity engineering



Airborne: Our electronic systems and services include low-volume rapid response equipment and ground support test equipment design and manufacture. Our development processes assure high levels of integrity.



Space: We develop electronics, sensors and instruments for satellites. Our system, simulation and hardware skills contribute to all phases of projects from feasibility study to full implementation.



Ground support: We supply complex test and operational support equipment for the full mission life cycle. A speciality is transponders for the calibration and exploitation of active microwave systems.



High-integrity engineering: We apply our engineering expertise to provide services for extreme environments. We have special expertise in developments for ultra-clean environments (biological and chemical) and for nuclear radiation hardening.

Transport

SEA delivers intelligent transport solutions to the road and rail networks, offering an independent and innovative approach to resolve technologically complex transport systems requirements.

Our expertise covers major applications for traffic monitoring and control, digital enforcement and road user charging, interactive vehicle and infrastructure systems. We develop integrated back office support systems and engineering tools enabling clients to maximise their efficiency. Our methodologies for the design, development, assessment and testing of technically complex schemes are proving to be of increasing interest to customers responsible for planning the long-term road and rail future.

PRIMARY BUSINESS AREAS

- Enforcement
- Traffic control
- Rail
- Technical services



Enforcement: An unparalleled reputation in developing and delivering innovative digital monitoring and enforcement products for traffic management. Offering mobile and static systems, road user charging, back office control and traffic monitoring.



Traffic control: Experienced in engineering design and development of software intensive systems. Products include active traffic management, hard shoulder monitoring, journey time prediction and motorway traffic and incident detection.



Rail: SEA possesses wide-ranging capability in the implementation of mission-critical systems for rail networks. Capabilities include asset data systems, passenger information systems, real time operation support system and development tools.



Technical services: Independent consultancy covering complete life cycle including requirements management, architectural and detailed system design and development, risk and safety assessment, management and system test, integration and acceptance.